

Combi

子育てに、イノベーションを。

高機能美モデル

雙邊さく乳器

Combi



自然吸韻



10段變頻吸力



催乳+吸乳模式



小型輕量好攜帶



動態美型顯示



單雙兩用 吸力不減

母乳  
應援

台灣康貝股份有限公司

地址：11493台北市內湖路一段360巷6號6樓

客服：(02)7720-8585 傳真：(02)2657-8685

[www.combi.com.tw](http://www.combi.com.tw)

[www.combibaby.com.tw](http://www.combibaby.com.tw)

產品使用說明書



# 目錄

使用前注意事項	1
部件說明	2
清潔消毒	3
吸乳前準備	5
雙邊電動吸乳器組裝說明	7
雙邊電動吸乳器按鍵說明	9
電源連接方式	10
雙邊電動吸乳器操作說明	11
雙邊電動吸乳轉換手動吸乳	12
母乳儲存與解凍	13
Combi 母乳應援系列	14
故障排除	15
產品規格	16

## 使用前注意事項

- 使用前請詳細閱讀本產品說明書，檢查吸乳器所有配件有無破裂或損壞。
- 使用前請使用清潔劑清洗雙手。
- 使用前請使用 Combi 奶瓶蔬果洗潔液清洗全部配件（不含電動主機及矽膠導管），清洗後以沸水或蒸氣消毒。使用沸水消毒時，建議煮沸消毒時間為 2-3 分鐘，請勿超過 3 分鐘。配件放入後應攪動沸水，讓沸水流動於配件內讓消毒沒有死角。
- 塑膠配件清洗完之消毒殺菌，應避免使用紫外線照射，以免塑膠部件老化。
- 矽膠配件消毒後若有輕微霧化現象，為矽膠吸水特性屬正常現象。
- 吸乳器塑膠部件可能因長時間使用、摩擦及消毒烘乾，產生變形或粉末等無法避免之現象。當發生此狀況時，請更換該部件。
- 使用時請勿將儲乳瓶傾斜放置或儲乳超過最大容量線刻度。
- 若發生儲乳瓶傾倒時，請先關閉主機電源再扶正儲乳瓶。
- 使用者若遇乳頭凹陷、乳腺炎、乳頭扁平或產後出乳量少等狀況，請詢問醫生或護士的指導使用。
- 請勿自行拆解、修理或修改本產品主機。

使用操作  
說明影片



### 警告事項

- 假如發現變壓器、USB 電源線有缺口、損傷或插頭鬆脫時，請勿使用本產品。
- 請勿讓幼兒拉扯或舐舔變壓器、USB 電源線。不使用本產品時，應收起變壓器、USB 電源線在幼兒接觸不到的地方。
- 主機弄濕時，應立刻把變壓器、USB 電源線從插頭上拔除，並且把主機上之水份拭乾。
- 除了使用時以外，請把變壓器、USB 電源線拔除，並將此產品及所有配件放置於孩童無法接觸的地方。
- 連接變壓器、USB 電源線時，請確保沒有異物附在電源插頭或連接器上，以免短路以致火災。
- 請定期以乾布拭去電源插頭上之灰塵，以免短路引致火災。
- 拔除變壓器、USB 電源線時，請勿拉扯變壓器、USB 電源線，應手持末端插頭並將電源拔除。
- 請勿在手沾有水份的情況下碰觸變壓器、USB 電源線、插頭或插座，以免觸電危險。
- 本吸乳器僅限使用 Combi 吸乳器所屬配件，請勿使用其他品牌的吸乳器配件，以免影響吸乳效果或造成主機損壞。
- 請勿於本產品上安裝玻璃奶瓶，以免不小心掉落破損造成意外。
- 本產品的附屬變壓器、USB 電源線只適用於本產品，不適用於其他電器產品。
- 本電器不得由體能、感知能力和意識能力不足、無經驗和知識的人士使用（包含兒童），除非由負責其安全的人士監督或指導使用。

## 部件說明

### 電動吸乳器主體



### 配件



# 清潔消毒

## 第一次使用前與每次使用後的清潔消毒

- 1 清洗吸乳器所有配件(不含電動主機、變壓器、吸乳導管、T型接管、USB電源線)



- 2 用溫水沖洗所有配件



- 3 使用Combi奶瓶蔬果洗潔液、奶瓶刷及奶嘴刷，徹底清洗所有配件



- 4 用溫水仔細沖洗所有配件



- 5-1 使用沸水消毒



- 5-2 或使用蒸氣消毒鍋消毒



- 6 清洗消毒後，請擦拭後置放於乾布上或直接放於奶瓶保管箱內



### ⚠️ 清潔注意事項

- 請使用溫水及洗潔液徹底清洗本吸乳器所有配件（不含主機、變壓器、吸乳導管、T型接管、USB電源線），以避免產生乳垢和孳生細菌。
- 請勿使用硬式刷毛或清潔粉清潔，以避免產品受損。請使用軟式海綿清洗。
- 鴨嘴閥若發現有密合不良或破損時，請更換新的鴨嘴閥。
- 母乳具有油脂，附著時較難施力卸除鴨嘴閥，清洗吸乳器配件及鴨嘴閥前，請先用溫水沖洗附著在鴨嘴閥上的母乳，過度施力鴨嘴閥口將導致鴨嘴閥破損。卸除時請以姆指及食指指腹握於鴨嘴閥口，以左右搖晃的方式卸除鴨嘴閥。
- 清洗後的配件請放入奶瓶消毒烘乾鍋或沸水進行消毒。使用沸水消毒時，建議煮沸消毒時間為2-3分鐘，請勿超過3分鐘。配件放入後應持續攪動，讓沸水流動於配件內讓消毒沒有死角，同時避免配件接觸鍋緣高溫而造成變形。
- 消毒完畢後請將配件放於陰涼乾燥處風乾。組裝使用吸乳器前請確保配件上無任何水漬殘留。
- 請勿將主機及變壓器浸在水中或用水沖洗，若有任何髒污，使用乾淨略濕的布擦拭即可。
- 拆卸清洗時，請避免過度施力導致零件破損而無法使用。
- 請妥善保管各部位零件，避免遺失而無法使用。
- 請勿使用自動洗碗機清洗本產品。
- 請勿使用漂白劑清洗本產品。

# 吸乳前準備

## 吸乳前的按摩方式

步驟一：擁有愉快的心情是重要的喔，我們希望生產出愉悅的母乳，給我們的寶貝。

步驟二：洗淨雙手及完成吸乳器配件的消毒步驟，確實地清潔才能保護寶寶。

步驟三：一般來說乳頭不需特別清潔，除非媽媽香汗淋漓，才需清潔乳頭，應避免用清潔劑及肥皂過度清潔乳頭，以免乳頭過度乾燥而易龜裂。

步驟四：按摩乳房，一般來說，如果乳汁順暢，乳房沒有腫塊，擠奶之前是不需要做任何準備的，但如果有硬塊，可適時的按摩乳房，可以先在距離乳頭 2-3 公分處按壓，刺激噴乳反射；按摩乳房切忌以手指在乳房上用力滑動，按摩也勿用過強力道，以免造成乳房破皮受傷。

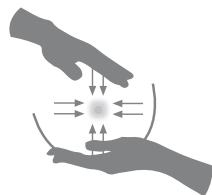
### 按摩方式



**環形按摩：**  
雙手托住乳房上下左右來回進行環形按摩。



**螺旋按摩：**  
一手固定乳房、另一手手指由底部向乳頭循序進行螺旋按摩。



**擠壓按摩：**  
以雙手置於乳房兩側，由底部向乳頭擠壓。一手固定乳房，另一手手指由底部向乳頭循序進行擠壓按摩。

步驟五：擠奶時可兩側輪流交替，直到流速變慢，可刺激噴乳反射以增加乳汁移出的速度。



## 熱敷？冷敷？兩者的差別在哪？

熱敷可在生產後乳房柔軟及尚未脹奶時，或是乳腺有通卻奶量不多時，此時利用熱敷可促進乳汁分泌。熱敷時應注意溫度不要太高約 40 度溫水，以免燙傷皮膚，且勿蓋住乳頭，熱敷時間勿過長，每次以 10-15 分鐘為限。也可利用洗澡時浴室的蒸氣，身體微傾，輕輕晃動雙側乳房也可達到相同效果。

但若因乳腺不通、乳房腫脹、擠奶後造成的疼痛等，皆不建議熱敷，應以冷敷處理，以減緩疼痛、組織水腫及發炎反應，降低乳房表面溫度。冷敷可用水袋、溼毛巾或洗淨的高麗菜葉，請勿使用冰塊直接冰敷，避免因溫度過低而造成凍傷。

冷敷時請勿冷敷乳暈及乳頭，否則反而會抑制乳汁排出。

不管是熱敷或冷敷，正確地將乳汁移出才是最重要的。如果發現乳房皮膚呈現紅腫熱痛，奶量變少，且有發燒或媽媽感覺畏寒情況應立即就醫，並持續排空乳房。

### 熱敷方式



### 冷敷方式



# 雙邊電動吸乳器組裝說明

## 雙邊電動吸乳器組裝

1 將鴨嘴閥圓底套入喇叭罩底部圓槽



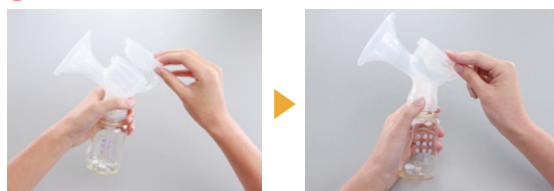
! 為方便拆卸，建議鴨嘴閥套入約1cm即可



2 將喇叭罩以及奶瓶組合，須完全鎖上以免外漏



3 將吸力杯平貼放入喇叭罩頂部原槽內



! 請確保吸力杯的邊緣確實套入頂部圓槽內

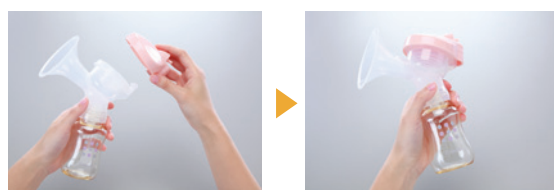


4 將矽膠罩套入喇叭口



! 請確認矽膠罩邊緣有確實套入喇叭罩口

5 將電動上蓋闔上喇叭罩內的吸力杯



! 上蓋拆除時請由尾部向上托起



6-1 當單邊吸乳器使用時

方法一：將吸乳導管插入電動主機氣閥與電動上蓋，將變壓器插入主機及插座（或使用USB供電）即可開始使用



方法二：將T型接管插入電動主機氣閥，接管一端蓋緊，將與T型接管相接的導管連接電動上蓋，將變壓器插入主機及插座（或使用USB供電）即可開始使用



6-2 當雙邊吸乳器使用時

將T型接管插入電動主機氣閥，將另一條吸乳導管一端接上T型接管端。雙邊導管另一端分別接上二個電動上蓋，將變壓器插入主機及插座（或使用USB供電）即可開始使用



或



! 注意：使用單邊/雙邊功能時，請先確認主機已設定正確吸乳模式，以免造成吸力不足或過強狀況發生。  
雙邊模式：請搭配使用兩組喇叭罩。  
單邊模式：請搭配使用一組喇叭罩。（使用T型接管時請務必塞住T型接管另一端）

# 雙邊電動吸乳器按鍵說明

## 雙邊電動吸乳器按鍵說明



螢幕圖示 / 按鍵	使用說明
電源鍵	開機：主機取得電源後，請長按3秒即可開機，開機後再按一次電源鍵即可啟動集乳。 暫停：在使用過程中，隨時按壓電源鍵即可暫停吸乳 暫停2分鐘後，啟動省電裝置自動關機 暫停中再次按壓電源即可再次啟動集乳 關機：在使用過程中隨時長壓3秒即可關機
催乳 / 吸乳切換鍵	開機預設為催乳模式，運行二分鐘後會自動切換為吸乳模式。運行中可隨時切換催乳/吸乳模式。(每次開機會記憶關機前次使用按摩/吸乳段數，不需重新設定)
段數增強 / 單雙邊切換	使用中可以增加段數，最強為10段。 單邊模式下，長按可以從單邊模式切換為雙邊模式
段數減弱 / 單雙邊切換	使用中可減少段數，最弱為1段。 雙邊模式下，長按可以從雙邊模式切換為單邊模式
催乳 / 吸乳模式	<ul style="list-style-type: none"> <li> 催乳：按摩乳房，刺激乳腺</li> <li> 吸乳：吸吮實感，深層吸乳</li> </ul>
吸力段數	顯示當前使用吸力段數
催乳 / 吸乳使用計時	啟動吸乳後開始記錄使用時間，模式切換時仍會同步計時。
單 / 雙邊模式顯示	<ul style="list-style-type: none"> <li> 單層動態花瓣：單邊吸乳模式</li> <li> 雙層動態花瓣：雙邊吸乳模式</li> </ul>

# 電源連接方式

## 1 使用AC電源變壓器供電：

將AC電源變壓器的L型接頭端插入主機的DC插孔，電源變壓器插座插入電源插座。



## 2 使用USB行動電源供電：

將USB電源線L型DC圓柱接頭插入主機DC插孔，USB接頭插入行動電源接口。  
(行動電源：5V / 2.1A)



**!** 注意：本產品使用AC電源變壓器供電效果最佳

## ⚠ 使用注意事項

- 使用USB電源線供電時，請務必確認供電裝置輸出的供電電壓及電流，電壓不足會造成吸乳器吸力不足，電壓過大會造成主機承受過度而損壞。

建議供電 電壓：5V~6V

建議供電 電流：1A~2.1A

\*在此建議供電範圍外可能無法供電。

- 在啟動吸乳器前請確認所有組件都確實組裝後再行啟動，以避免異物透過主機氣閥吸入主機造成主機故障。
- 在手濕的情況下請勿插用變壓器或USB電源線，避免觸電可能。
- 出國時使用，請攜帶該國轉換插頭，並注意該國電壓是否符合本變壓器之負荷。
- 請在兒童無法觸及的環境下使用變壓器、USB電源線。
- 此產品主機運作溫度範圍：5°C ~ 45°C。
- 本產品每次使用時間建議不超過50分鐘，並建議下次使用間隔至少40分鐘。



# 雙邊電動吸乳器操作說明

## 電動吸乳器操作

### 單邊吸乳



- 乳頭置於按摩罩的中心孔，按摩罩外緣緊密貼合乳房。大拇指及虎口夾住喇叭罩頸，其餘手指握緊瓶身。
- 開始吸乳時，請稍微將吸乳器往乳房推擠，以確保乳房及乳暈和按摩罩緊密貼合，以達到真空吸乳效果。
- 請依個人舒適度調整成最舒適的吸乳段數。若段數過強可能會造成乳房不適，若過輕則會影響出乳效果。

### 雙邊吸乳



- 開機後，雙手各持一組吸乳瓶，並讓乳頭分別置於兩個按摩罩的中心孔，按摩罩外緣緊密貼合乳房。大拇指及虎口夾住喇叭罩頸，其餘手指握緊瓶身，開始吸乳。
- 請依個人舒適度調整成最舒適的吸乳段數。若段數過強可能會造成乳房不適，若過輕則會影響出乳效果。

### ⚠ 吸乳時注意事項

- 吸乳前請參考本說明書內吸乳前準備，以輔助吸乳效果。
- 請確保乳房和吸乳器緊密貼合，以達到真空吸乳效果。
- 使用中若發出“砰”的空氣擠壓聲，即為喇叭罩和乳房沒有密合。
- 使用過程中，請依個人舒適度，選擇個人感覺最舒適的段數或按壓速度及力道，若過強可能會造成乳房不適，若過弱則會影響出乳效果。
- 若吸乳過程產生不適，請立即停止使用，並諮詢專業醫師及護士。
- 集乳時請注意乳汁勿超過儲乳瓶最高儲乳量線。
- 本吸乳器喇叭罩的螺牙是專為 Combi 標準口徑奶瓶所設計，請勿使用其他品牌奶瓶，避免乳汁外漏或是結合密合度不佳導致儲乳瓶掉落。
- 請勿使用玻璃奶瓶，以免因注入母乳後瓶身過重，而導致吸乳器跌落。
- 請隨時將吸乳器直立置放，避免乳汁從排氣孔或喇叭罩滲漏的可能。
- 鴨嘴閥的密合影響吸乳時的吸力，當發現鴨嘴閥口有密合不良或是破損時，請更換新的鴨嘴閥使用。
- 矽膠罩可依個人的舒適度決定使用與否，並不會影響吸力。

## 雙邊電動吸乳轉換手動吸乳 (手動配件可另行購買)

### 1 將手動吸力杯與中柱組裝



⚠ 請確認中柱有確實與杯底密合



### 2 將矽膠導管、電動上蓋及電動吸力杯拔除。

將手動吸力杯平放於喇叭罩頂部圓槽內。



⚠ 請確保手動吸力杯的邊緣確實套入頂部圓槽內



### 3 將手動把手前叉處確實卡入吸力杯的中央圓柱，卡入後同步將把手押入喇叭罩卡榫，並蓋上手動吸乳器上蓋罩。



⚠ 請確實按壓並聽到“卡”一聲，即為組裝正確



### ⚠ 使用注意事項

- 詳細手動吸乳器使用，請詳『Combi 自然吸韻手動吸乳器操作使用說明書』。
- 手動配件（手動上蓋、把手）為紫色，與雙邊吸乳器顏色不同，但不影響功能。



## 母乳儲存與解凍

供健康足月的嬰兒使用的母乳儲存及解凍加熱的建議方式

### 母乳冷藏

儲奶位置	環境溫度	儲奶期限	儲奶容器	備註
室溫	低於 25°C	6-8 小時	奶瓶	<ul style="list-style-type: none"> <li>使用儲乳墊片或加蓋</li> <li>注意室溫的變化</li> </ul>
冷藏袋	-15~4°C	24 小時	奶瓶或母乳儲存袋	<ul style="list-style-type: none"> <li>使用冰袋或冰磚</li> <li>盡量不要打開冰桶</li> </ul>
冰箱	0-4°C	5 天	奶瓶或母乳儲存袋	<ul style="list-style-type: none"> <li>放於冰箱內側</li> <li>切勿放在冰箱門旁或靠外側</li> </ul>

### 母乳冷凍

儲奶位置	環境溫度	儲奶期限	儲奶容器	備註
單門冰箱冷凍室	-15°C	2 週	母乳儲存袋	<ul style="list-style-type: none"> <li>使用防水貼紙記錄儲乳日期及容量</li> </ul>
多門冰箱冷凍室	-18°C	3 到 6 個月	母乳儲存袋	<ul style="list-style-type: none"> <li>母乳儲存量切勿超過袋身標示最大容量線避免冷凍膨脹擠壓破裂</li> <li>置放於冷凍室內側</li> </ul>
獨立式冰櫃	-20°C	6 到 12 個月	母乳儲存袋	<ul style="list-style-type: none"> <li>母乳飲用採先進先出原則</li> </ul>

### 母乳解凍 / 加熱

母乳狀態	解凍 / 加熱方式	解凍後室溫放置時間	解凍之母乳	備註
剛擠出母乳	可直接飲用 / 隔水加熱	X	當餐飲用	<ul style="list-style-type: none"> <li>解凍後母乳不可再次冷凍或冷藏</li> <li>加熱後母乳不可再次加熱</li> <li>不可使用微波爐解凍或加熱母乳</li> <li>以 60°C 以下水溫隔水加熱</li> <li>加熱時需輕搖容器，使母乳脂肪均勻混合及均勻受熱</li> </ul>
冷藏室取出	隔水加熱	X	當餐飲用	
冷凍室取出	冷水沖至解凍後隔水加熱	4 小時	當餐飲用	
	移置冰箱冷藏室內解凍後隔水加熱	4 小時	24 小時內飲用	

資料來源：1. 國民健康局 103 年度母乳哺育教戰手冊。2. The Academy of Breastfeeding Medicine. (2004) Clinical Protocol Number #8: Human Milk Storage Information for Home Use for Healthy Full Term Infants

## Combi 母乳應援系列



母乳應援系列  
Combi Breast Feeding Support



### 哺餵儲乳

|| Combi 母乳力學哺乳瓶



### 貼身衣著

|| Cupro 內衣系列  
|| 天然彩棉內衣系列



### 清潔消毒

|| 微電腦高效能消毒烘乾鍋  
|| 奶瓶保管箱



### 集乳輔助

|| Combi 自然吸韻雙邊電動吸乳器  
|| Combi 自然吸韻手電動二合一吸乳器  
|| Combi 自然吸韻電動吸乳器  
|| Combi 自然吸韻手動吸乳器



### 貼身呵護

|| 3D 貼身防溢乳墊  
|| 超薄乾爽防溢乳墊  
|| 多功能哺乳靠墊



## 故障排除

為什麼沒有吸力或吸力不足？

- 白色鴨嘴閥沒有緊密套入喇叭罩內或有破損。
- 吸力杯沒有緊密套入喇叭罩或有破損。
- 矽膠導管沒有緊密套入主機及上蓋或是有破損。
- 電動上蓋未完全卡緊吸力杯邊緣。
- 沒插上電源或行動電源電力衰減。
- USB供電電壓不足5V-6V。

乳汁從吸乳器溢出？

- 使用時請將吸乳器垂直握住。
- 請使用儲乳瓶底座避免吸乳器翻覆。
- 本吸乳器喇叭罩的螺牙是專為 Combi 標準口徑奶瓶所設計，請勿使用其他品牌奶瓶，避免乳汁外漏或是接合密合度不佳導致儲乳瓶掉落。

母乳殘留於吸力杯或矽膠罩內？

- 在吸引過程中母乳採噴射狀態，會因出乳量以及吸引力道的強度讓母乳在喇叭罩內四射。
- 若母乳殘留於吸力杯及矽膠罩內為正常現象，而非產品密合度有瑕疵。

矽膠配件產生霧化現象

- 矽膠配件在沸水蒸氣消毒後若有輕微霧化現象，為矽膠吸水特性的正常現象。

配件損壞或購買

- 請於原購買店家、Combi官方購物網站(<http://www.combi-house.com.tw/v2/official>)或與康貝技術服務中心連繫購買配件。  
康貝客服專線 (02)7720-8585

## 產品規格

內容物

部件名稱	材質	耐熱度	產地	數量
電動吸乳器主機	ABS丙烯晴 丁二烯苯 乙烯共聚物	-20°C ~80°C	台灣	1
通用變壓器100V~240V				1
USB電源線				1
電動吸乳器吸力杯	Silicone 矽膠	-20°C ~120°C	台灣	2
電動吸乳器吸乳導管				1
電動吸乳器吸乳導管 (含PP聚丙烯T型接管)				1
矽膠罩				2
洩乳鴨嘴閥				2+2(備品)
儲乳墊片				2
電動吸乳器上蓋	PP 聚丙烯 塑膠	-20°C ~100°C	台灣	2
吸乳喇叭罩				2
奶瓶底座				2

母乳力學奶瓶

部件名稱	材質	耐熱度	產地	數量
母乳力學奶嘴	Silicone 矽膠	-20°C ~120°C	中國	2
母乳力學奶瓶	PES 聚醚砜 塑膠	-20°C ~180°C	台灣	2
奶嘴環	PP 聚丙烯 塑膠	-20°C ~100°C	中國	2
奶瓶蓋			中國	2

商品名稱：Combi自然吸韻雙邊電動吸乳器  
 主機型號：DEBP17PI  
 淨重：電動主機 206(±3)g  
 尺寸：包裝尺寸：38.3 x 26.5 x 11.2cm  
 電動主機：93.8 x 93.5 x 56.5(±3)mm  
 額定電壓 (V): 100~240 VAC  
 額定頻率 (Hz): 50/60 Hz

總額定消耗電功率：15W  
 製造日期：標示於外盒上  
 製造號碼：標示於主機底部  
 產地：台灣  
 注意事項或警語：相關內容請詳閱說明書  
 使用方法及緊急處理方法：相關內容請詳閱說明書

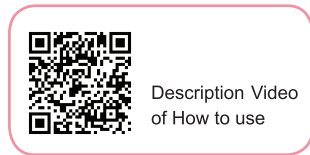


# Index

- Precautions ..... 1
- Name of Components ..... 2
- Cleaning and Disinfection ..... 3
- Preparation before Breast Milk Expression ..... 5
- Double Electric Breast Pump Installation ..... 7
- Double Electric Breast Pump Motor Descriptions ..... 9
- Power Connection Method ..... 10
- Double Electric Breast Pump Operation ..... 11
- Convert Electric Breast Pump to Manual Type ..... 12
- Storing and Preparing Breastmilk ..... 13
- Combi Breast Feeding Support Series..... 14
- Troubleshooting ..... 15
- Product Specifications ..... 16

## Precautions

- Read this user manual in detail before use. Check there is no cracks or damages on any of the parts.
- Clean your hands with detergent before use.
- Clean all accessories (excluding the main body and silicone tube) with Combi Detergent for Feeding Bottles. After that, boil or steam for sterilization. If sterilized by boiling water, the recommended duration is 2 ~ 3 minutes, but never exceeds 3 minutes. Stir the boiling water after putting in the accessories in order to completely sterilize them in the flowing water.
- Keep the plastic accessories away from direct sunlight after clean in order to prevent aging components.
- Atomization after sterilization is normal phenomenon for silicone accessories due to its water absorption characteristics.
- Long-term use, scrub, sterilization and drying of the plastic accessories may cause deformation or deterioration which is unavoidable. Replace the accessory when it happens.
- Do not tilt the breast milk storage bottle or store over the maximum capacity line.
- In case the milk storage bottle is tilted, switch off the pump and then correct the position.
- Consult and use the pump as advised by doctor or nurse for users with hollow nipple, mastitis, flat nipple or inadequate breast milk produce after giving birth.
- Do not dismantle, repair or alter the main body on your own.



### Warnings

- Do not use the pump when there is crack or damage on the power cord or when the plug is loose.
- Do not pull or lick the power cord. Keep the power cord away from children when it is not used.
- Remove the power cord from the socket if the main body gets wet immediately and dry the main body.
- Remove the power cord when it is not used and keep the pump and all the accessories away from children.
- Ensure there is nothing attached on the power cord and on the connector before connecting the power cord to avoid short circuit.
- Rub away dust on the power cord regularly in order to avoid short circuit.
- Hold the plug end and remove the power. Do not pull the power cord upon power removal.
- Do not touch the power cord, plug or socket when your hands are not dry in order to avoid the risk of electric shock.
- Combi electrical breast pump accessories are exclusive for this pump. Do not use accessories of the other brands in order to avoid poor pumping effects and damages of the main body.
- Do not install glass milk bottle onto this pump in order to avoid accidents.
- Attached power cord is exclusive for this pump and not applicable to other electronic products.
- People with insufficient fitness, perception, awareness, no experience and knowledge (including children) should not use the pump, unless under guardian supervision.

## Name of Components

### Electric Breast Pump



### Accessories



## Clean and Disinfection

Cleaning before the first use and after every usage

**1** Clean all accessories (except the main body, adaptor, silicone tube, T-shaped tube, and USB cable).



**2** Rinse all accessories in warm water.



**3** Completely clean all accessories with bottle brush, nipple brush and Combi Detergent for Feeding Bottles.



**4** Carefully rinse all accessories with warm water.



**5-1** Sterilize in boiling water.



**5-2** Or sterilize in steam sterilizer.



- 6 After sterilization, place them onto a dry towel or put them into the storage box directly.



### Notes

- Clean all accessories with warm water and detergent to avoid milk scale and bacteria, expect main body, silicone tube, adaptor, T-shaped tube and USB cable.
- Do not use hard bristles or abrasive powder for cleaning to avoid damaging the products. Clean with soft sponge.
- Replace the valve when it is damaged or its adaptation is poor.
- Rinse the milk attached on the valve in warm water before cleaning the pump and the valve, so as to remove the valve easier without fat in the milk. Excessive force will damage the valve.
- Sterilize accessories by boiling water or sterilizer after cleaning. If sterilized by boiling water, the recommended duration is 2 to 3 minutes, but never exceeds 3 minutes. Stir the boiling water after putting in the parts in order to completely sterilize them in the flowing water and prevent deformation.
- Air-dry accessories in a cool dry location after sterilization. Ensure there is no any water remained before setting up the pump.
- Do not immerse or rinse the main body and the adapter in water. Rub with a clean wet towel if dirty.
- Avoid excessive force when unloading accessories for cleaning or may cause damages to the accessories.
- Keep all accessories properly to avoid missing.
- Do not wash this product with automatic dishwasher.
- Do not clean this product with bleach.

## Preparation before Breast Milk Expression

### Massage before expressing

Step 1. Having a happy mood which is very important to produce pleasant breast milk for our babies.

Step 2. Clean your hands and complete the disinfection steps of accessories in order to protect the baby.

Step 3. Cleaning nipple. However, in general, your nipple does not require any special cleaning unless you are sweating. You should avoid over cleaning nipple with detergent or soap which may result dry and cracked nipple.

Step 4. Breast massage. In general, no preparation is needed before pumping if milk runs out smoothly and there is no lump in the breast. However, if there is lump, you may massage your breast timely. First, press 2 to 3 cm from the nipple to stimulate milk ejection. Never massage the breast firmly or strongly to avoid injuring breast.

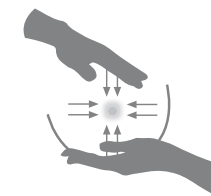
#### Massage method



**Circular Massage:**  
Massage the breast back and forth and up and down with both hands.



**Spiral Massage:**  
Fix the breast with one hand and massage from base to nipple with another hand orderly.



**Extrusion Massage:**  
Hold both sides of the breast with both hands, press from base to nipple.

Step 5. Pumping on alternating sides until milk flow slows down, which can stimulate the milk expression to increase milk flow speed.

## Warm Paste? Cold Paste? What are the differences?

Warm paste can stimulate milk secretion which is suitable for mother with soft breast after production and not yet with breast tenderness, or with small milk amount. Be careful the temperature should not exceed 40°C to avoid skin burn. Do not cover nipple. Warm paste should limit to 10 to 15 minutes but not too long. You may also gently lean your body in bath. The steam during bath can also result in the same effect.

However, warm paste is not suitable for stuffed breast, swelling breast, or pain breast after breast milk expression. Cold Paste should be used instead in order to reduce breast surface temperature which reduces pain, edema and inflammation reactions.

Use water bag, wet towels or washed cabbage leaves. Do not use ice directly to avoid frostbite due to too low temperature.

Do not cold paste areola and nipple, otherwise it will suppress milk discharge.

Discharge breast milk correctly is the most important regardless warm or cold paste.

Consult doctor immediately if your breast skin is pain, swelling, fewer milk or you feel cold and get fever, but still continue emptying your breast.

### Warm Paste



### Cold Paste



## Double Electric Breast Pump Installation

### Setting up Double Electric Breast Pump

- 1 Insert the round bottom of valve into the circular groove of the bottom of shield breast.



! To facilitate disassemble, 1cm of insertion is suggested.



- 2 Connect and lock the breast shield with the feeding bottle to avoid leaking.



- 3 Insert the silicone diaphragm into the circular groove on top of the breast shield.



! Ensure diaphragm edge has securely inserted into the circular groove.



- 4 Insert the silicone cover into the funnel of breast shield.



- 5 Cover silicone diaphragm with top cover.



! Remove the top cover from bottom to top during disassembly.





### 6-1 Using Single Breast Pump

**Method 1 :** To start using, connect the silicone tube with the top cover and air valve of the main body. Connect power adaptor with main body and power socket (or using USB power battery).



**Method 2 :** To start using, insert T-shaped tube into the air valve of the main body. Close one end of the T-shaped tube. Connect the other end with top cover and connect power adaptor with main body and power socket (or using USB power battery).



### 6-2 Using Double Breast Pump

To start using, insert T-shaped tube into the air valve of the main body and connect two silicone tubes with the T-shaped tube at one end and both top covers at the other. Then, connect the power adaptor with main body and power socket (or using USB power battery).



**Note:** Make sure the body is set on correct mode when using Single/Double function to avoid insufficient or excessive suction power.

**Double mode:** Please use two sets of breast shields.

**Single mode:** Please use one set of breast shield only.

(Make sure the other end of the T-shaped tube is closed when using.)

## Double Electric Breast Pump Motor Descriptions



Screen display / button	Description
Power Button	<p>Power on : After connecting with the power source, press the button and hold for 3sec. to start up the body. After the machine is on, press the button one time to start collecting milk.</p> <p>Pause : During the use, you can press the button at any time to pause the milk collection. After pausing for 2mins, the machine will shut down automatically to save the power. Press the power button again can restart milk collecting function.</p> <p>Power off : Press the button and hold for 3sec. during the use can power off the machine.</p>
Simulation / Expression Mode Switching Key	Simulation is the default mode once the power is on. Running with this default mode for two minutes the machine will automatically switch to milk expression mode. You can switch between these two modes during the use (The machine memorizes the last simulation / expression power level while reset is not necessary.)
Increase Power Level Single/Double Mode Switch	To increase power during use. Highest level is 10. Press and hold the button can switch the mode from single to double.
Decrease Power Level Single/Double Mode Switch	To decrease power during use. Lowest level is 1. Press and hold the button can switch the mode from double to single.
Simulation / Expression Mode	<ul style="list-style-type: none"> <li>💧 Simulation : Breast massage to stimulate lactation.</li> <li>💧 Expression : Milk expressing and deep pumping.</li> </ul>
Power Level	To display current suction power level.
Simulation / Expression Timer	To record using time after start and keep recording when mode switched.
Single/Double Mode Display	<ul style="list-style-type: none"> <li>🌸 Single-layer dynamic petal : Single breast pump mode.</li> <li>🌸 Double-layer dynamic petal : Double breast pump mode.</li> </ul>

## Power connection method

### 1 Using AC Power Adaptor:

Plug the L-connector end of the AC adaptor into the DC socket of the main body and insert the adaptor into the power socket.



### 2 Using USB Power Battery:

Plug the L-connector of USB cable into the main body and connect the USB plug with the USB power battery.  
(Power bank: 5V / 2.1A)



**Note:** Using AC Power Adaptor will best perform the product.

### Warnings

- Make sure the voltage and current are correct when using USB power battery. Low voltage will lead to insufficient power for the machine and over high voltage may cause damage to the machine.

Suggested Voltage: 5V~6V

Suggested Current: 1A~2.1A

\*Out of this range may fail to supply power for the product.

- To prevent foreign parts being accidentally sucked into the product and cause damage, make sure all parts of the product have been properly assembled before start using the device.
- To prevent potential risk of electric shock, do not connect the adaptor or USB cable to the power with wet hands.
- Notice the power supply of the local country and equip the product with suitable adaptor, if you use the product abroad.
- Use the adaptor and USB cable safely and keep them away from children.
- Normal operation temperature of this product ranges between 5°C~45°C.
- It is recommended not to use the product for more than 50 minutes and the interval between two-time uses shall be at least 40 minutes.

## Double Electric Breast Pump Operation

### Single Sided Suction



- Place the nipple at the center of the silicone cover. Fit the rim of the funnel tightly onto the breast. Grip the neck of the breast shield between the thumb and the index finger. Grab the bottle tightly with the rest of the fingers.
- Press the breast pump slightly against the breast at the start of the suction to ensure that the breast and the areola are fit tightly onto the funnel and achieve a vacuum effect required for suction.
- Adjust the level of the suction power according to personal comfort. Discomfort on the breast will occur if the power is too strong. If the power is too weak, the suction result will be affected.

### Double Sided Suction



- Hold a set of suction bottles on each hand and place the nipple at the center of each silicone cover. Fit the rim of the funnel tightly onto the breast. Grip the neck of the breast shield between the thumb and the index finger. Grab the bottle tightly with the rest of the fingers and start the suction.
- Adjust the level of the suction power according to personal comfort. Discomfort on the breast will occur if the power is too strong. If the power is too weak, the suction result will be affected.







### Precautions of using breast pump

- Read "Preparation before Breast Milk Expression" in this manual in order to enhance pumping effectiveness.
- Ensure your breast is tightly fit into the pump for vacuum pumping effect.
- "Bang" sound during use is air squeak sound, meaning that breast shield and breast is not closely attached.
- Select your most comfortable power level and speed during use, breast discomfort may be resulted if it is too strong, while pumping effect may be affected if it is too weak.
- Stop using the pump and consult professional doctors and nurses for discomfort during breast pumping.
- Do not store over the maximum capacity line of the breast milk storage bottle.
- The thread of the given breast shield is exclusively designed for Combi standard feeding bottle.
- Do not use feeding bottle of other brands to avoid milk leakage caused by poor adaptation.
- Do not use glass feeding bottle to avoid dropping the pump due to overweight after filling in breast milk.
- Always place the pump vertically to avoid leaking from breast shield or stoma.
- Replace a new white valve when it is damaged or its adaptation is poor since the adaptation of duckbill valve effects suction power.

## Convert Electric Breast Pump to Manual Type

*(Accessories of manual breast pump purchased separately)*

- 1 Assemble the silicone diaphragm and shaft.
- 2 Detach the tube, top cover and electric silicone diaphragm. Insert the manual silicone diaphragm into the circular groove on top of the breast shield.
- 3 Insert the U-shaped end of the handle into the shaft. Press down the handle to lock it with the breast shield. Place the top cover.



Ensure shaft and diaphragm installed securely.



Ensure diaphragm edge has securely inserted into the circular groove on the top.



Make sure a "click" sound is heard to assemble correctly.



### Notes for using the pump

- Please refer to the user manual of Combi Manual Breast Pump for detailed operation of the manual pump.
- Color of manual pump accessory (top cover, handle) is purple which is different from the electric breast bump but does not affect its functionality.

## Storing and Preparing Breastmilk

### *Freshly expressed breastmilk storage guidelines*

#### Breast Milk in Refrigeration

Storage Location	Environmental Temperature	Storage Time Limit	Container	Remarks
Room Temperature	below 25°C	6-8 hours	Milk Bottle	<ul style="list-style-type: none"> <li>• Use storage cap or cover.</li> <li>• Notice the temperature changes.</li> </ul>
Fridge	-15~4°C	24 hours	Milk bottle or storage bag	<ul style="list-style-type: none"> <li>• Use ice bag or ice brick.</li> <li>• Do not open the ice bucket too often.</li> </ul>
Freezer	0~4°C	5 days	Milk bottle or storage bag	<ul style="list-style-type: none"> <li>• Place in the inner part of the fridge.</li> <li>• Do not place in the outer part or near the door.</li> </ul>

#### Freezing Breast Milk

Storage Location	Environmental Temperature	Storage Time Limit	Container	Remarks
Freezer in single door fridge	-15°C	2 weeks	Milk Storage Bag	<ul style="list-style-type: none"> <li>• Using water-proof sticker to record date and volume of milk storage.</li> </ul>
Freezer in multiple doors fridge	-18°C	3 to 6 months	Milk Storage Bag	<ul style="list-style-type: none"> <li>• Do not store more than the maximum capacity stated on the storage bag to avoid extrusion split due to freezing expansion.</li> </ul>
Standalone Freezer	-20°C	6 to 12 months	Milk Storage Bag	<ul style="list-style-type: none"> <li>• Place the milk bottles or storage bags at the inner side of the refrigerator.</li> <li>• Feed on first-in-first-out principle.</li> </ul>

#### Thawing / Heating Breast Milk

State of Breast Milk	Thawing / Heating Method	Deposited time in room temperature after thaw	Breast Milk after thawing	Remarks
Fresh breast milk	Feed directly / Impermeable heating	X	Feed instantly	<ul style="list-style-type: none"> <li>• Do not re-freeze thawed breast milk.</li> <li>• Do not re-heat thawed breast milk.</li> </ul>
Taken out from fridge	Impermeable heating	X	Feed instantly	<ul style="list-style-type: none"> <li>• Do not use microwave oven to thaw or heat breastmilk.</li> </ul>
Taken out from freezer	Thaw in running cool water and then by impermeable heating	4 hours	Feed instantly	<ul style="list-style-type: none"> <li>• Impermeable heat in 60°C or below water.</li> <li>• Shake container softly while heating to mix the fat and milk well and ensure evenly heated.</li> </ul>
	Thaw in running cool water and then by impermeable heating	4 hours	To be consumed within 24 hours	

Source: 1.Taiwan National Health Council Year 2014 Breastfeeding Handbook.  
 2.The Academy of Breastfeeding Medicine (2004)Clinical Protocol Number #8 : Human Milk Storage Information for Home Use for Healthy Full Term Infants

## Combi Breast Feeding Support Series



Combi Breast Feeding Support



### Feeding

|| Combi Breast Feeding Bottles



### Maternity Underwear

|| Cupro underwear series  
|| Natural Colored Cotton underwear series



### Cleaning & Disinfection

|| High efficiency disinfection sterilizer and dryer.  
|| Milk bottles storage container



### Milk Collection Assistance

|| Combi Natural Rhyme Double Electric Breast Pump  
|| Combi Natural Rhyme Electric & Manual 2-in-1 Breast Pump  
|| Combi Natural Rhyme Electric Breast Pump  
|| Combi Natural Rhyme Manual Breast Pump



### Personal Care

|| 3D Breast Pad



## Troubleshooting

### Why is there no suction or insufficient suction power?

- The valve is not closely inserted into the breast shield or it is damaged.
- Silicone diaphragm is not closely inserted into the breast shield or it is damaged.
- Silicone tube is not closely inserted into the main body and the top cover or it is damaged.
- The top cover of the electric breast pump is not fitted tightly on to the top of breast shield.
- The power supply is not connected or the power from the portable power battery is not enough.
- The USB power supply is not reaching 5~6V.

### Why is milk overflowing or spilling out from the breast pump?

- Hold the breast pump vertically when in use.
- Please use the feeding bottle base to prevent the breast pump from overturning.
- The thread of the breast shield is exclusively designed for Combi standard feeding bottle. Do not use feeding bottle of other brands to avoid milk overflow caused by poor adaptation.

### Why is there breast milk residues remaining in the silicone diaphragm or silicone cover?

- Due to the amount of breast milk and strength of the suction power, breast milk will be ejected into the breast shield during pumping.
- Breast milk remained in silicone diaphragm or silicone cover is normal phenomenon but not caused by adaptation defect of the product.

### Why are silicone accessory parts become misty?

- Due to the water absorption property of silicone, it is normal for the silicone accessories to appear slightly misty after being sterilized with boiling water or vapor.

### Damaged accessories or buying of accessories

- Please go to the shop where the breast pump was purchased or find your local agency.

# Product Specification

## Content

Parts Name	Material	Heat Resistance	Place of Origin	Quantity
Electric Breast Pump	ABS Propylene Butadiene styrene copolymer	-20°C~80°C	Taiwan	1
Adaptor (100V~240V)				1
USB Power Cord				1
Silicone Diaphragm	Silicone	-20°C~120°C	Taiwan	2
Tube			Taiwan	1
Tube (T-Shaped)			Taiwan	1
Silicone Cover			Taiwan	2
Valve			Taiwan	2 + 2 (spare)
Storage Cap			China	2
Electric Breast Pump Top Cover	PP Polypropylene	-20°C~100°C	Taiwan	2
Breast Shield			Taiwan	2
Feeding Bottle Base			Taiwan	2

## Combi Standard Feeding Bottle

Parts Name	Material	Heat Resistance	Place of Origin	Quantity
Nipple	Silicone	-20°C~120°C	China	2
Feeding Bottle	PES Polyether Sulfone	-20°C~180°C	Taiwan	2
Nipple Ring	PP Polypropylene	-20°C~110°C	China	2
Hood			China	2

### Product Name :

Combi Natural Rhyme Double Electric Breast Pump

**Model Number :** DEBP17PI

**Net Weight :** Main Device 206 (±3) grams

### Dimensions :

**Packaging Dimension:** 38.3 x 26.5 x 11.2 cm

**Main Device :** 93.8 x 93.5 x 56.5 (±3) mm

**Rated Voltage (V) :** 100~240 VAC

**Rated Frequency (Hz) :** 50/60 Hz

**Total Rated electric Power Consumption :** 15W

**Manufacturing Date :** As printed on the packaging

**Manufacturing Code :** As printed on the base of product

**Place of Origin :** Taiwan

### Precautions or Warnings :

Please refer to the user manual for related information

### Instructions and Emergency Treatment :

Please refer to the user manual for related information